

# CERTIFICATE OF LOCATION OF GOVERNMENT CORNER

Northeast \_\_\_\_\_ Corner of Section 12, Township 108, Range 40, 5th P.M.

STATE OF MINNESOTA, County of Murray

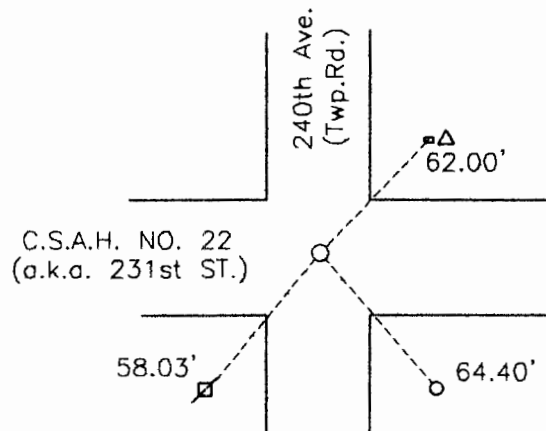
At the corner location shown on the sketch:

On Nov. 17, 1998 found a 1/2" iron stake  
DATE

left monument as found,  lowered monument,  removed monument (explain)

On \_\_\_\_\_ placed a \_\_\_\_\_  
DATE

### SKETCH OF REFERENCE TIES



Nail and seal in power pole 58.03' SW  
 Top of rural water valve 64.40' SE  
 Nail and seal in top of guard post next to telephone pedestal 62.00' NE

Statement of evidence relative to this corner location is on back of page.

I hereby certify that this document and the data contained herein was prepared by me or under my direct supervision.

*John E. Moseley* 11-18-98  
SIGNATURE DATE  
 Registration No. 11943

Land Surveyor,  Professional Engineer  
 County Surveyor,  County Engineer

#### OFFICE OF THE COUNTY RECORDER

County of \_\_\_\_\_  
 I hereby certify that this document was filed in the Co. Recorders office at \_\_\_\_\_ .M on the \_\_\_\_\_ day of \_\_\_\_\_ A.D. 19 \_\_\_\_\_

County Recorder \_\_\_\_\_  
 By \_\_\_\_\_, Deputy

DOCUMENT NO. \_\_\_\_\_

## Statement of Evidence

On May 13, 1899, J.W. Woolstercraft placed a stone at the corner.

In 1967 the Murray County Highway department dug and found a stone. Placed a steel pipe over stone.

On November 17, 1998, Moseng Land Surveying, found 1/2" iron pin at the road surface.